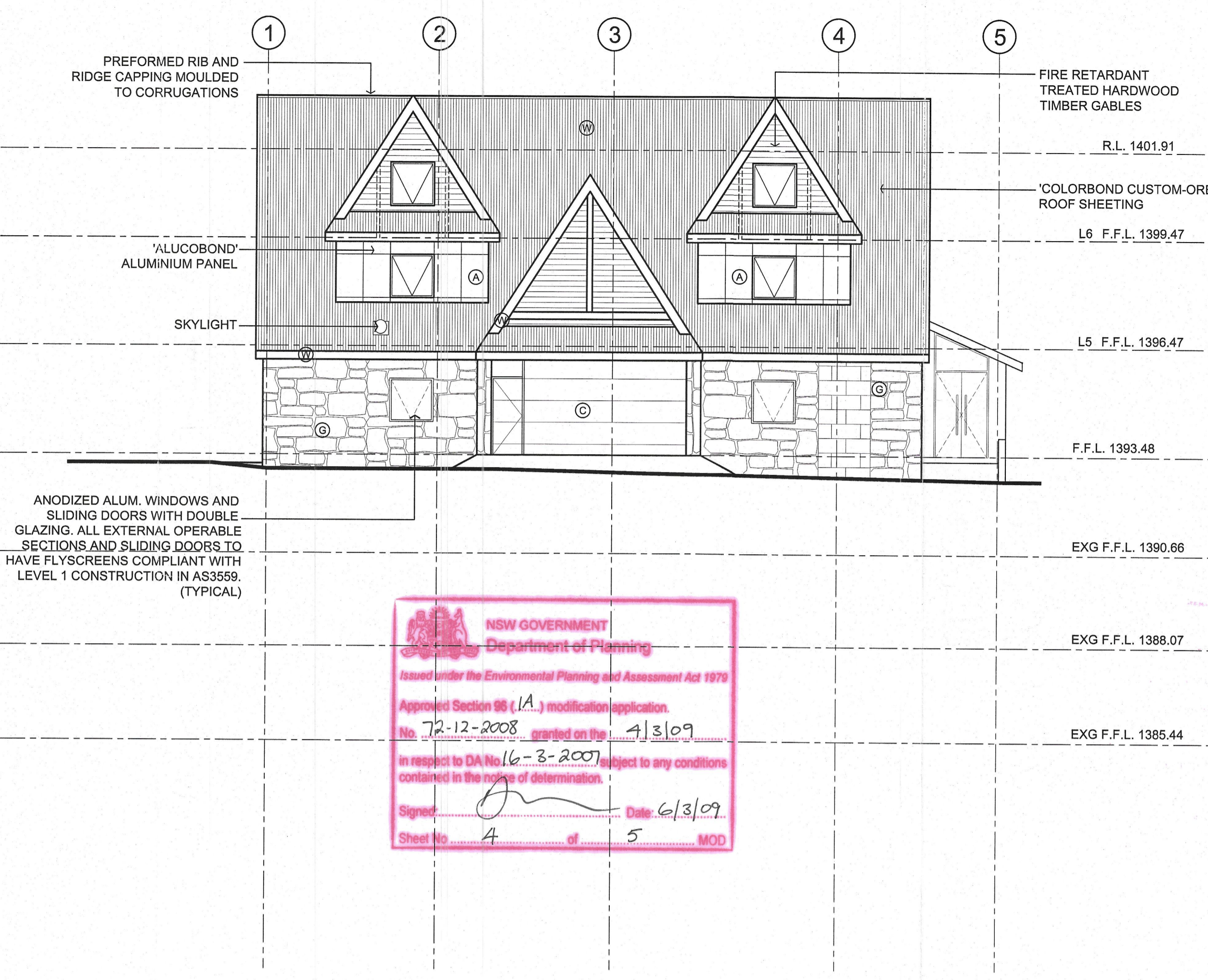
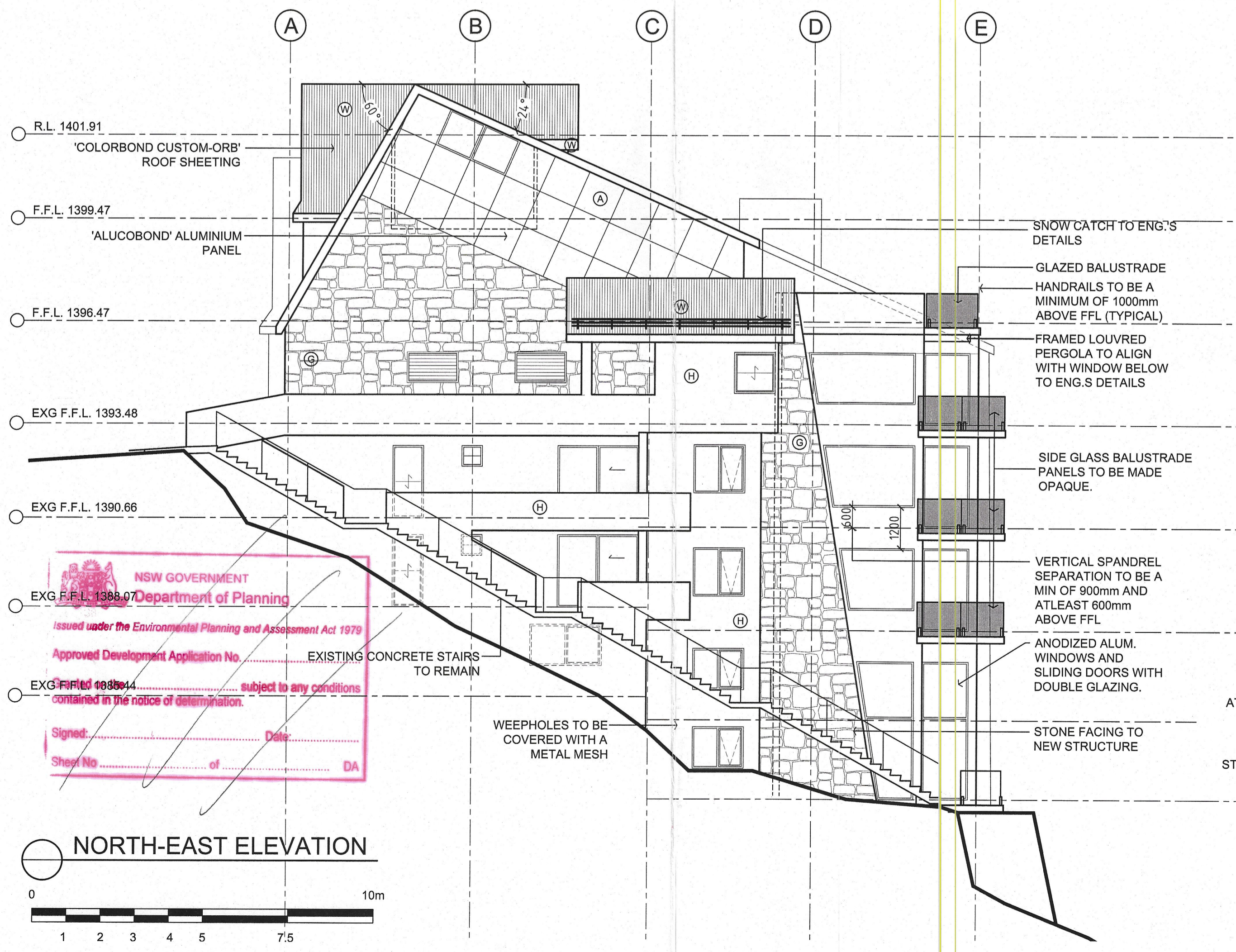


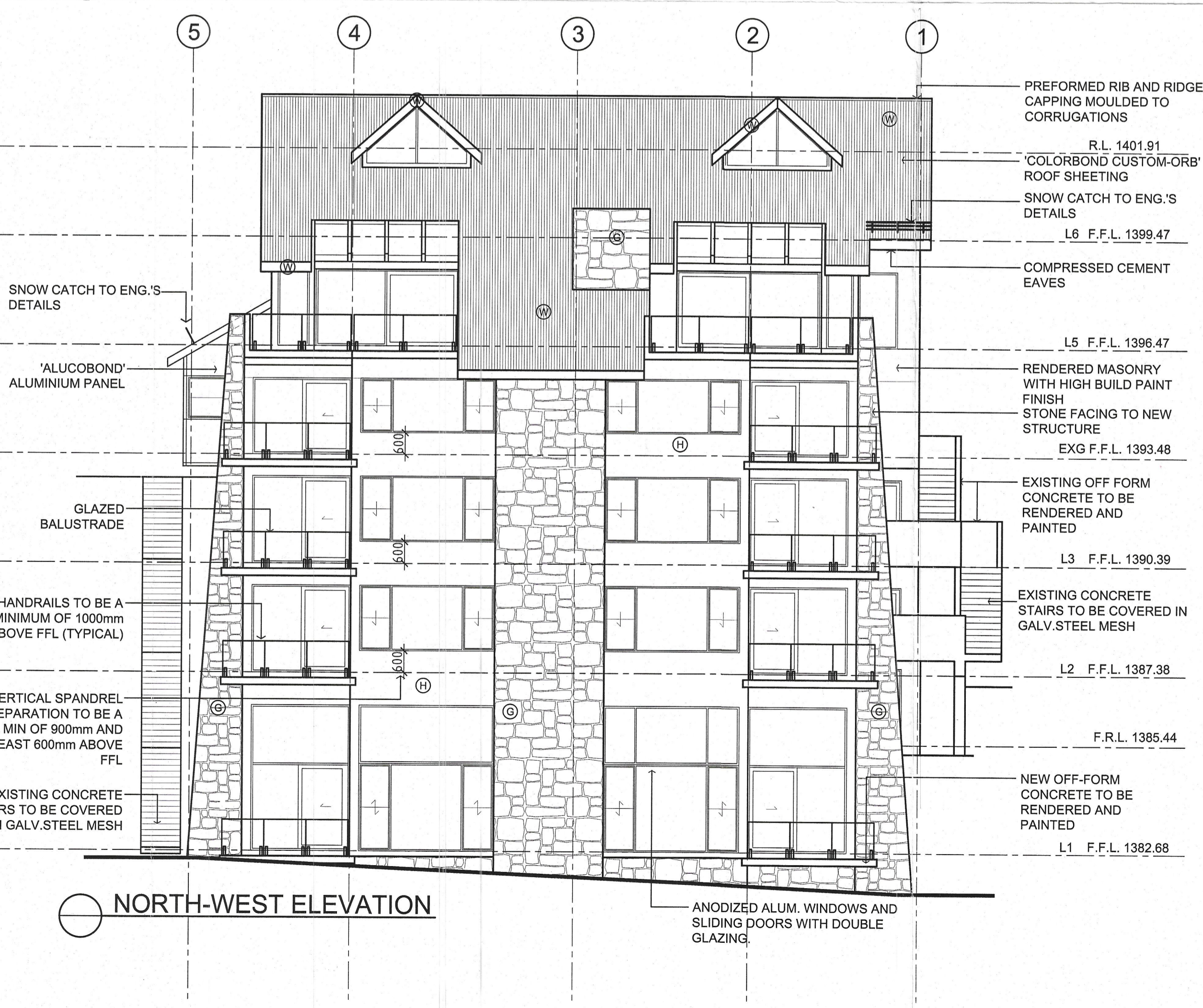
SOUTH-WEST ELEVATION



SOUTH-EAST ELEVATION



NORTH-EAST ELEVATION



NORTH-WEST ELEVATION

NOTE:
BUILDING TO BE A MINIMUM OF LEVEL 1
CONSTRUCTION AND TO COMPLY WITH AS
3959-1999

FINISHES SCHEDULE	
REF	FINISH
W	'COLORBOND - WOODLAND GREY'
C	WESTERN RED CEDAR - CLEAR FINISH
G	LOCAL GRANITE
H	'DULUX - HILDERGUARD'
A	CHAMPAGNE METALLIC (ALUCOBOND)

NSW GOVERNMENT
Department of Planning
Issued under the Environmental Planning and Assessment Act 1979
Approved Section 95 (1A) modification application.
No. 72-12-2008 granted on the 4/3/09
in respect to DA No 16-3-2007 subject to any conditions
contained in the notice of determination.
Signed: _____ Date: 6/3/09
Sheet No. 4 of 5 MOD

No	Date	Revision
25	28.01.09	RE-ISSUED FOR AMENDED DEV. CONSENT
24	02.12.08	RE-ISSUED FOR AMENDED DEV. CONSENT
23	28.11.08	ISSUED FOR DEVELOPMENT CONSENT
22	20.11.08	ISSUED FOR REVIEW
21	14.11.08	ISSUED FOR REVIEW
20	22.10.08	ISSUED FOR REVIEW
19	26.09.08	ISSUED FOR REVIEW
18	05.04.08	BASEMENT CARPARK LOUVRE VENTS AMENDED SKYLIGHTS AMENDED
17	31.03.08	FLOOR LVL AMENDED, MATCH AS CONSTRUCT.
16	20.12.07	ISSUED FOR CONSTRUCTION CERTIFICATION
15	09.11.07	ISSUED FOR REVIEW
14	30.10.07	ISSUED FOR REVIEW
13	24.10.07	ISSUED FOR REVIEW
12	28.09.07	ISSUED FOR REVIEW
11	27.08.07	ISSUED FOR REVIEW
10	03.08.07	ISSUED FOR REVIEW
9	25.07.07	ISSUED FOR REVIEW
8	28.02.07	ISSUED FOR DEVELOPMENT CONSENT
7	22.02.07	ISSUED FOR REVIEW
6	20.02.07	ISSUED FOR REVIEW
5	14.02.07	PRELIMINARY - ISSUED FOR REVIEW
4	05.02.07	ISSUED FOR REVIEW
3	26.01.07	ISSUED FOR REVIEW
2	22.01.07	ISSUED FOR REVIEW
1	15.01.07	ISSUED FOR REVIEW

Amendments
Project
PART. DEMOLITION OF 'NEW KIRK LODGE'
AND CONSTRUCTION A NEW
RESIDENTIAL FLAT BUILDING

Location
'NEW KIRK LODGE'
LOT 53 BOBUCK LANE
THREDBO. N.S.W.

Client
JAKESAM PTY.LTD.
OXLEY HILL PTY.LTD.
LAPENE PTY.LTD.
29 JAN 2009

Drawing
ELEVATIONS

SLATER ARCHITECTS
Plan2000 Pty.Ltd. Trading as Slater Architects ABN24001 954 392
P.O.Box 552, Terrigal, N.S.W. 2260
Suite 5/203 The Entrance Road, Erina, 2250
ph 02 43654458 fax 02 43652856
email: info@slaterarchitects.com.au
Catherine Slater - Registered Architect No.7153

Designed by CS	North Scale 1:100 @ A1
Drawn by MC	Date NOVEMBER 2008
Checked	Revision no. 25
Job no. 13634	Sheet no. A06

